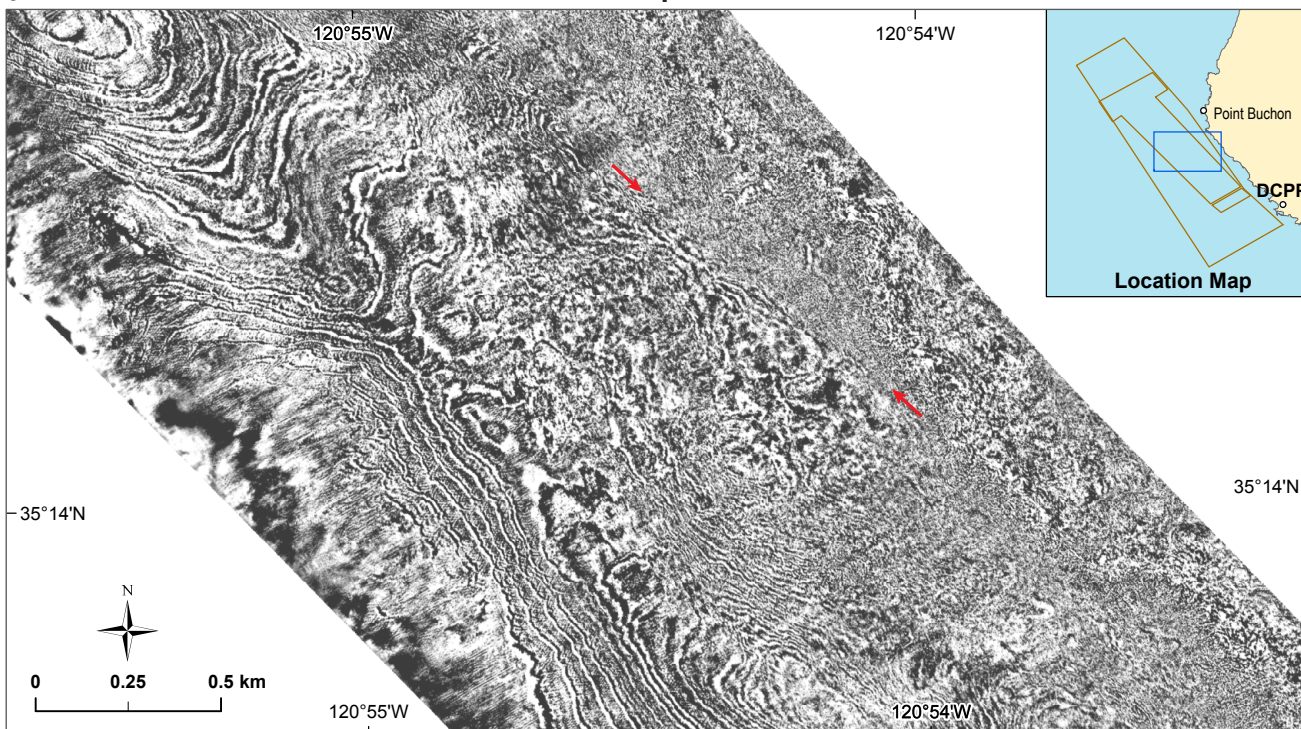


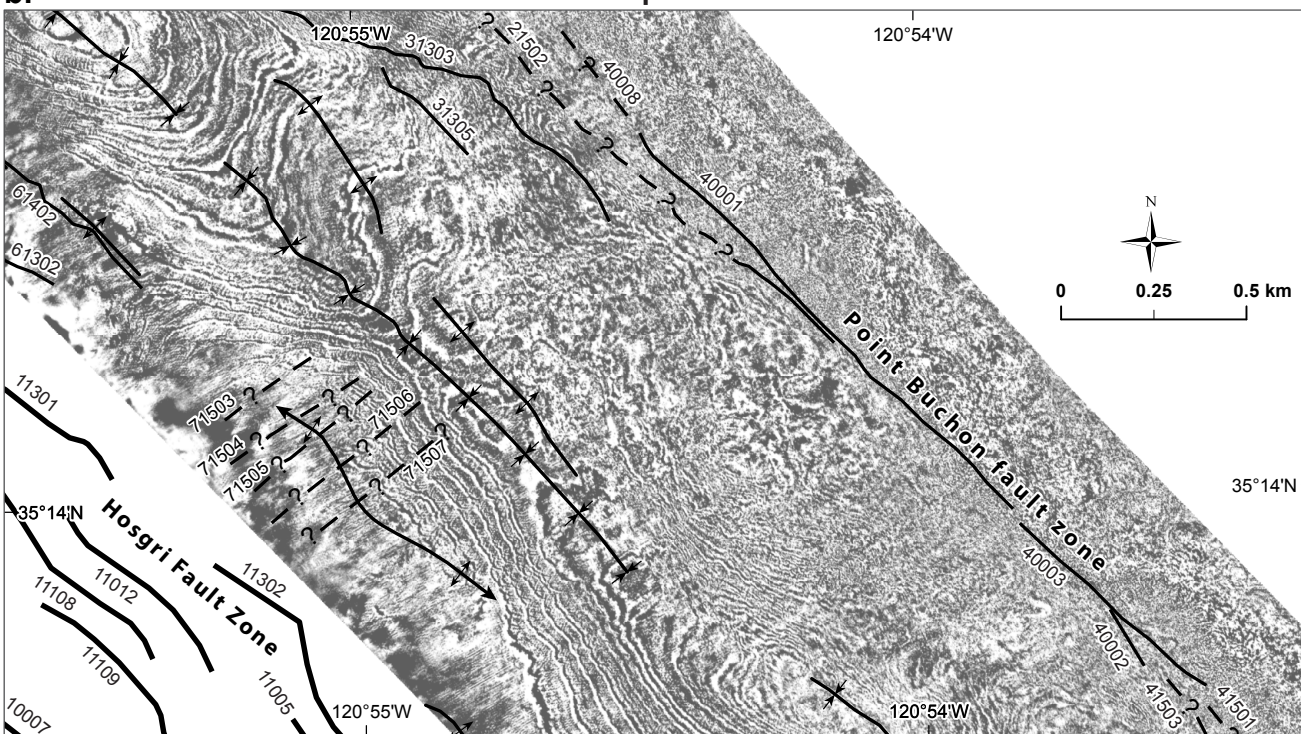
a.

Uninterpreted



b.

Interpreted



Explanation

—?— Faults, solid where well located, dashed where inferred or approximately located, queried where uncertain, dotted where buried by more than 20 milliseconds of undeformed strata



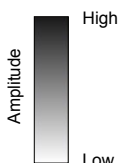
Syncline



Anticline



Point Buchon Fault Lineament



Amplitude time slice maps at 95 ms (TWTT) in the southern part of the 3D study area showing (a) uninterpreted and (b) interpreted strands of the Point Buchon fault zone

DCPP 3D/2D Seismic-Reflection Investigation



Pacific Gas and Electric Company

Figure 15